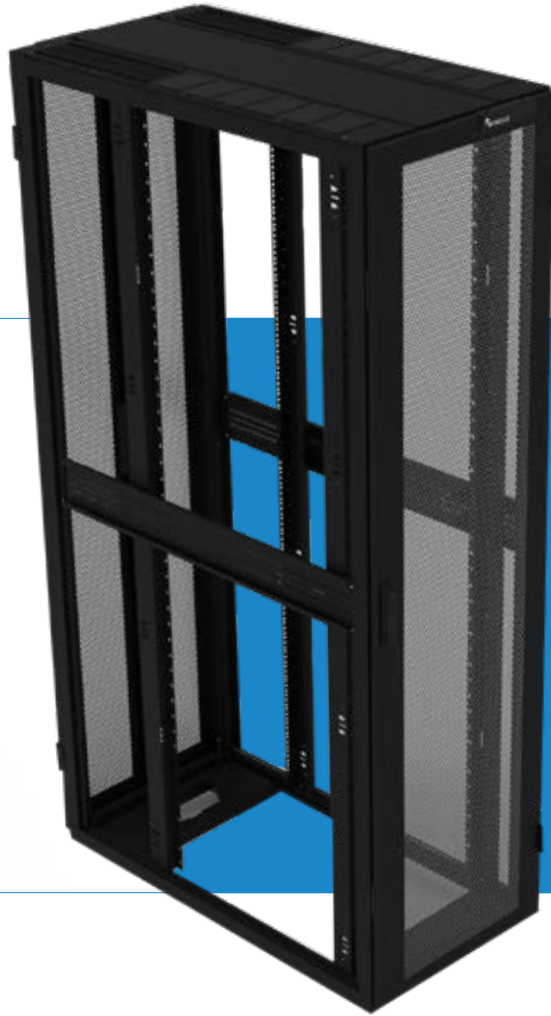


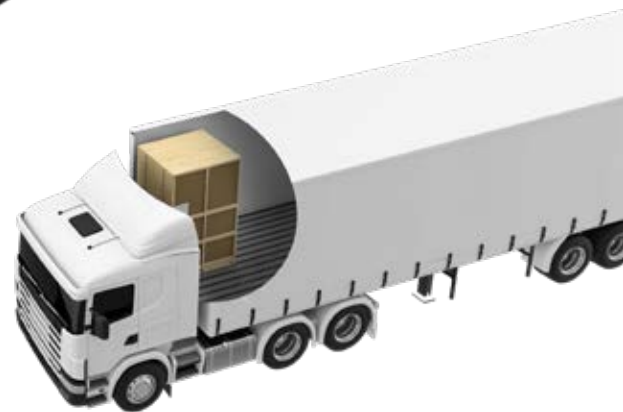
DATA
CENTER

NEXPAND



NEXPAND TR

SOLUTIONS FOR
RACK & STACK APPLICATIONS



MINKELS
A brand of **legrand**

NEXPAND TR

WHAT WE PROMISE

A server cabinet designed for shipping with pre-loaded IT equipment up to 1020 kg. Minkels Nexpan TR cabinet is fast to deploy in a safe, sustainable, and secure way. The reinforced cabinets are protected by special designed secure, reusable packaging (tested to International Safe Transport Association (ISTA) standards). These cabinets are then delivered to site and ready to run with minimum installation time and cost. Available as standard, or with the customizable options around your needs. Potential aspects being size, cable management, door options and integrated PDUs from the Legrand Data Center Solutions' portfolio. A perfect solution for rack and stack applications which is fully compatible with the Nexpan platform.



› Perfect for rack and stack applications, and compatible with the Nexpan platform.

› Reinforced cabinet up to 1020 kg (transport load) & 1500 kg (static load).

› Fast to deploy in a safe, sustainable, and secure way. Minimizes installation time and costs. Special designed reusable packaging (tested to ISTA standards).

› Fully customizable.

HOW DOES IT WORK?

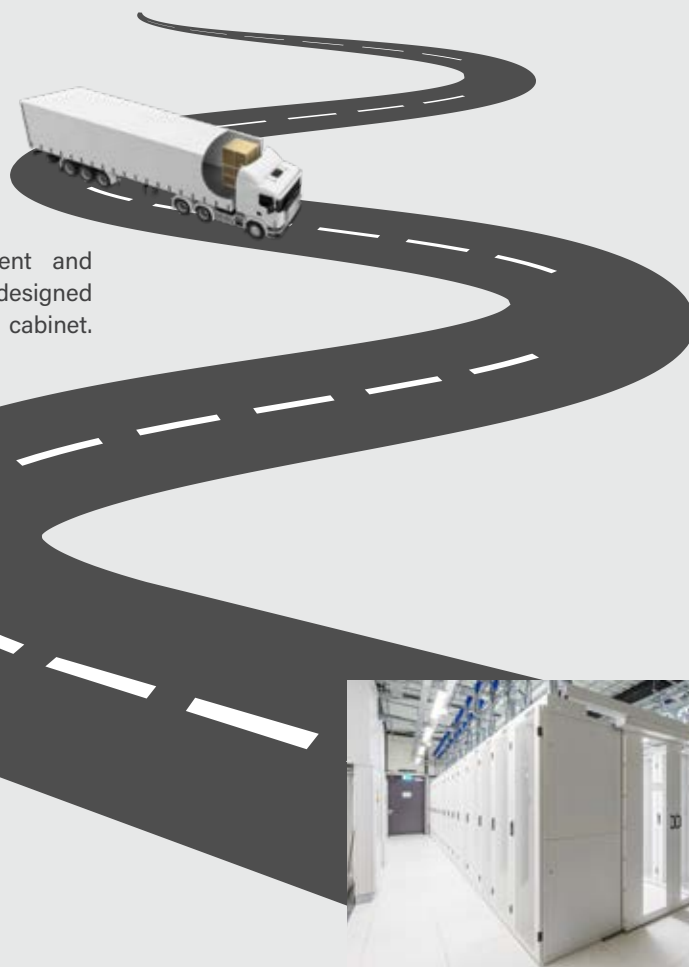
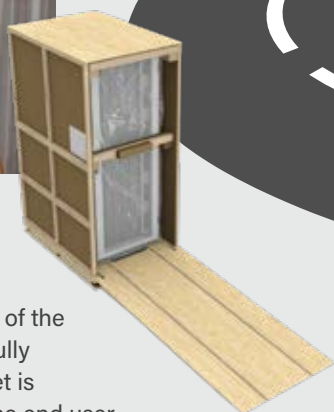
Nexpand TR is manufactured at Minkels, The Netherlands.

Nexpand TR is packed, and will be transported to the integrator.

The Integrator installs and tests the equipment and cabling. Nexpand TR is packed in a special designed crate which protects your IT equipment and the cabinet.



After installation of the equipment the fully equipped cabinet is transported to the end user.



The fully equipped Nexpand TR arrives on site. Time and cost of installation and implementation for end users are significantly reduced.

The packaging will return to the integrator and can be re-used for the next project.

SPECIFICATIONS		
Dimensions:		Standard
Height	U	42, 47 and 52
Height	mm	2028, 2250 and 2472
Width	mm	600 and 800
Depth	mm	1200
General:		
Colour		RAL 9003 (white) and RAL 9005 (black)
Static load capacity	kg	1500
Transport load	kg	1020
Airflow Management Package		Cabinet delivered with or without Airflow Management Package
Reusable packaging		Cabinet delivered with or without packaging

NEXPAND TR

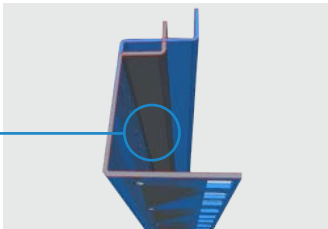
SAFE & SECURE

Nexpand TR answers the need of increasingly heavy/dense IT equipment and being capable of delivering these pre-loaded hardware cabinets safe and secure to site.

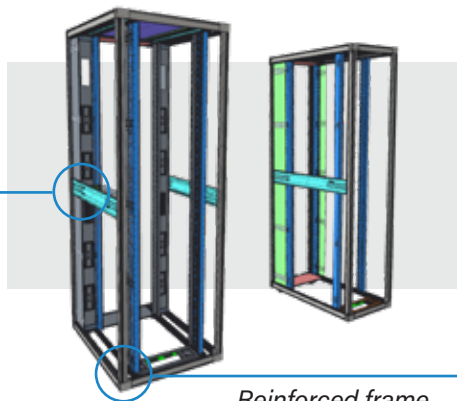


Transport load

Reinforced VMR



Strengthening beam

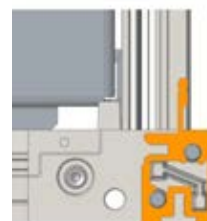


Reinforced frame

› Structural reinforcement has been provided in the Nexpand TR platform firstly by means of stronger, reinforced VMRs (also referred to as 19-inch profiles); secondly with the addition of a strengthening beam running the depth of the cabinet; thirdly, by incorporating a reinforced frame.



Nexpand TR cabinet

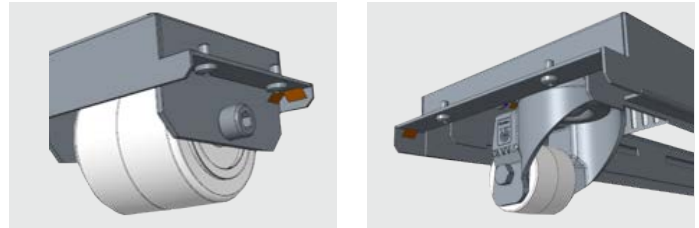


Nexpand cabinet



› There is a special full height TR side panel that is screwed to the frame on both sides for transport. This prevents the side panels from falling out due to the vibrations of transport.

FAST DEPLOYMENT



› We've also added castors as standard (optional on our standard ranges), capable of withstanding both the transport and static load capacities – 1020 and 1500 kgs respectively. The wheels are specially selected: they can easily ride over ramps, and are easy to move around.

SUSTAINABLE

› The packaging can be re-used, if handled carefully, at least 10 times. This is positive from a sustainability perspective but it also makes financial sense, as the lifecycle cost of our packaging solution will be less expensive than buying disposable packaging every time.

We use no single-use plastic and renewable materials in the packaging solution. Additionally, the packaging is modular in design so any damaged parts can be repaired or replaced.



SUSTAINABLE



COST-EFFECTIVE



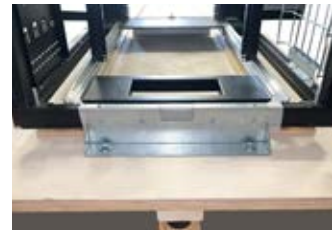
SPEED OF DEPLOYMENT

NEXPAND TR



SAFE, SECURE AND SUSTAINABLE PACKAGING

Transporting pre-loaded cabinets to the end customer's site is an important responsibility. Valuable IT equipment in transit requires the highest quality protective packaging. That's why we've developed an industry-leading reusable packaging design.



> Tested

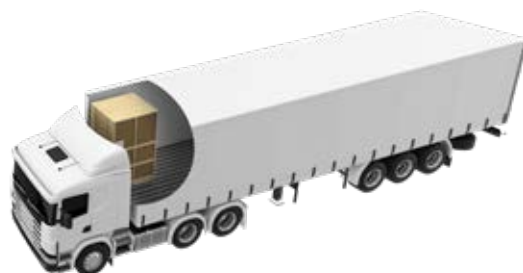
Our innovative packaging design has been tested according to International Safe Transit Association (ISTA) standards. We used the impact test to check for any damage to the contents if the package is knocked or dropped during transportation, the stability test to check the package will not tip over easily, and the vibration test to check against vertical movement in the truck.

> Ramp with guides

The packaging is of flat-pack design, consisting of a pallet base, the wooden casing, and the integral ramp - where other packaging solutions rely on the supply of a separate ramp, the front of our packaging folds down to provide the ramp. No special tools are required to secure the packaging prior to transportation or during the unpacking and installation phases - with the unpacking and installation manual guiding the end customer through these latter processes.

> Pallet bracket and shock pallet

The shock pallet in combination with the pallet bracket allows a good distribution of the weight during transport. The protective cushion of the pallet protects the cabinet and the IT equipment.

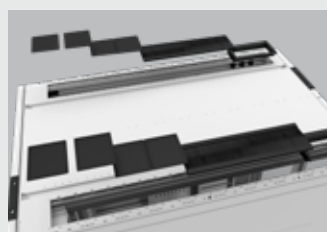
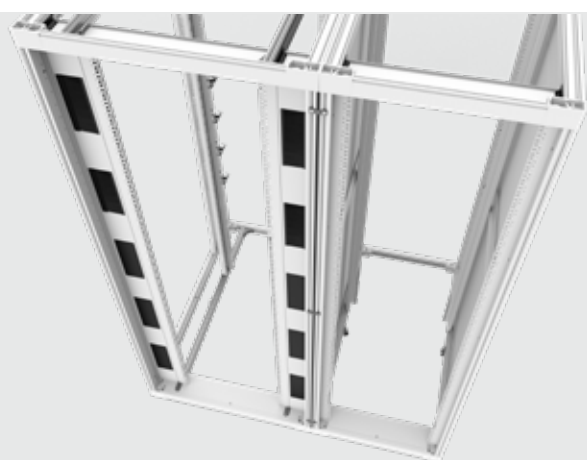




> FIND OUT MORE ABOUT NEXPAND IN THE BROCHURE:
WWW.MINKELS.COM/DOWNLOADS/NEXPAND

MINKELS NEXPAND FEATURES

Nexpand TR also benefits from the features of the Minkels Nexpand platform. The Minkels Nexpand platform offers a best-in-class airflow management for improved energy performance, as well as a fully modular and customizable design to best meet the needs of your servers, storage, switches, and other IT equipment. This means that you can complete your cabinet platform with accessories from our extensive portfolio, covering cable management, a range of door and locking options, different roof layouts and PDU mounting options.



> Frame

Offers unique flexibility through stepless mounting possibilities in all three dimensions of the cabinet. Threaded mounting rails in width, depth and height direction enable stepless adjustability (for example cable management).

> Door

Clean and minimalistic design with high level perforation. Full integration of the locking mechanism and cabling (in case of smart lock). Offers high level access security.

> Roof

Smart top-of-cabinet design. The amount of cabling in cabinets has increased considerably. To be able to continue to meet the changing needs, we have developed a cabinet with a smart, optimized design. For example, the top-of-cabinet section contains more space to guide the cables through and the positioning of the entries is improved.



WATCH ALL FEATURES:

www.minkels.com/solutions/nexpand-cabinets/nexpand-tr-rack-and-stack



FOLLOW US ON

 minkels.com

 linkedin.com/company/minkels



MINKELS HEADQUARTERS & INTERNATIONAL

Eisenhowerweg 12

P.O. Box 28

5460 AA Veghel

The Netherlands

t. +31 (0)413 311 100

info@minkels.com